

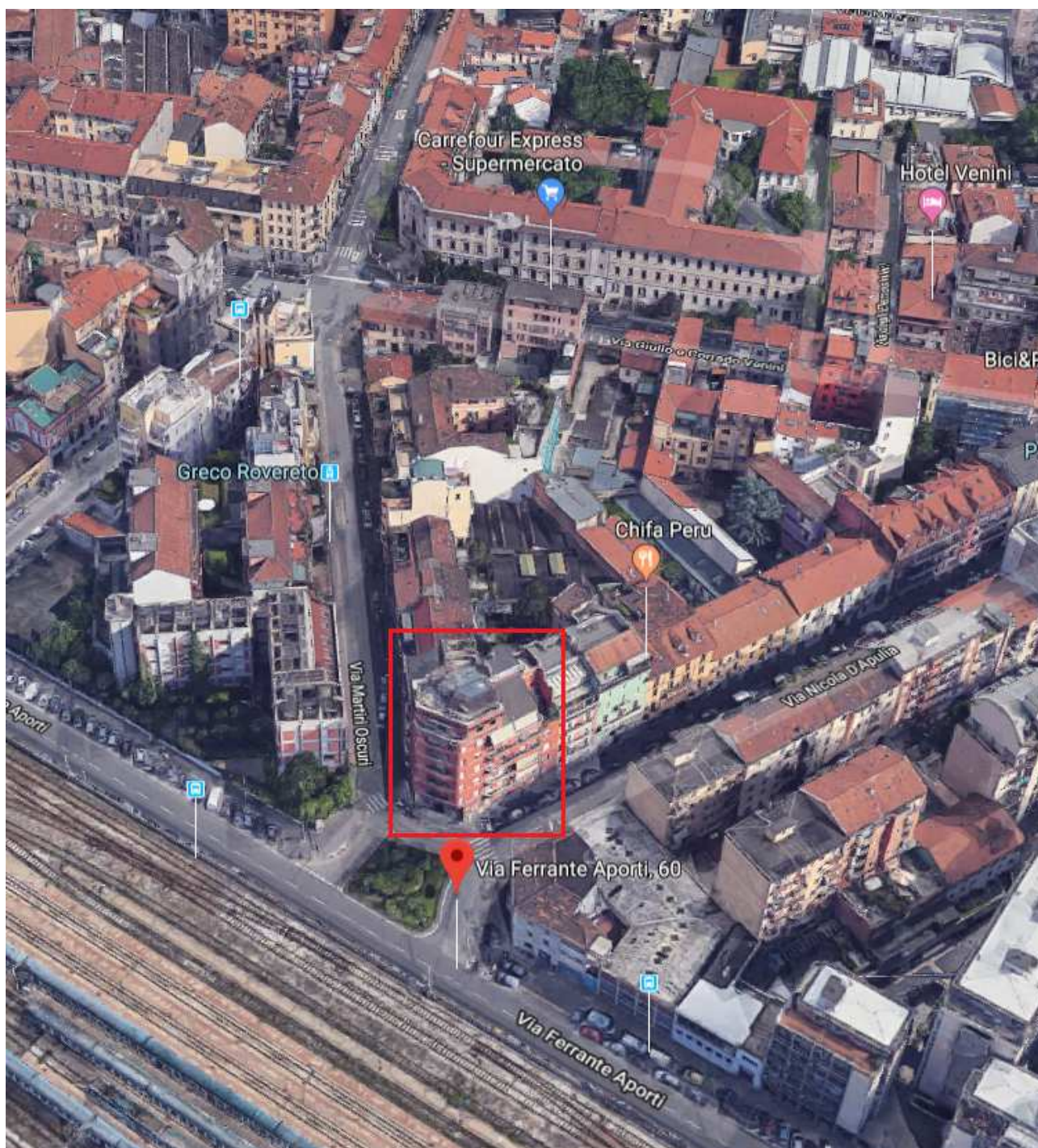
# TRIBUNALE DI MILANO

Sez. III Civile – G.E. Dott.ssa Galioto – Procedura esecutiva immobiliare

R.G.E. 1251/2018

## DOCUMENTAZIONE FOTOGRAFICA

Via Ferrante Aporti 60 – Milano



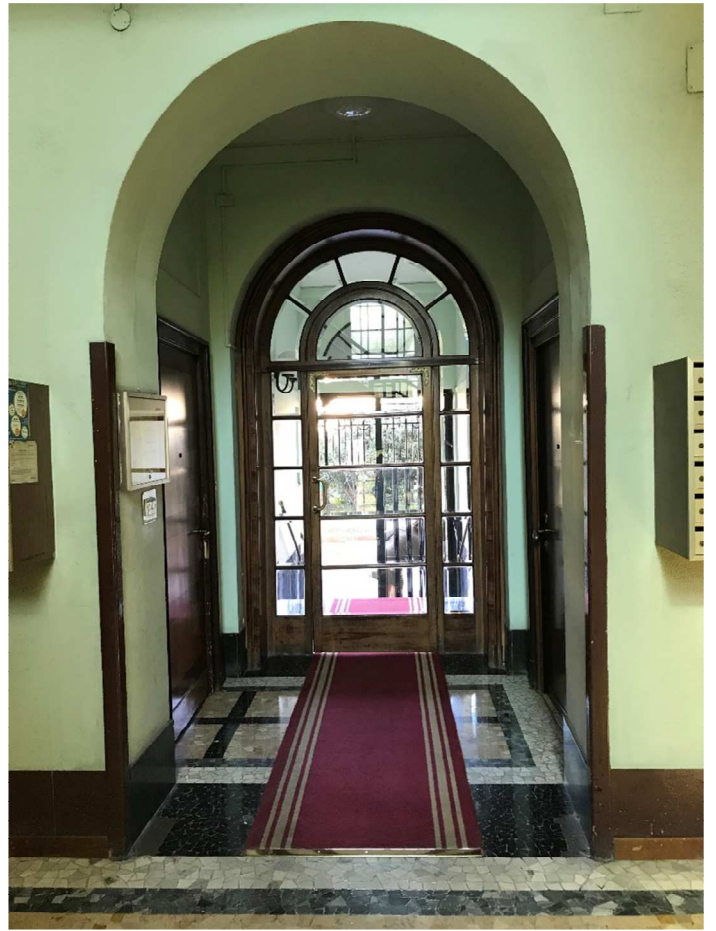


Edificio di Via Ferrante Aporti 60

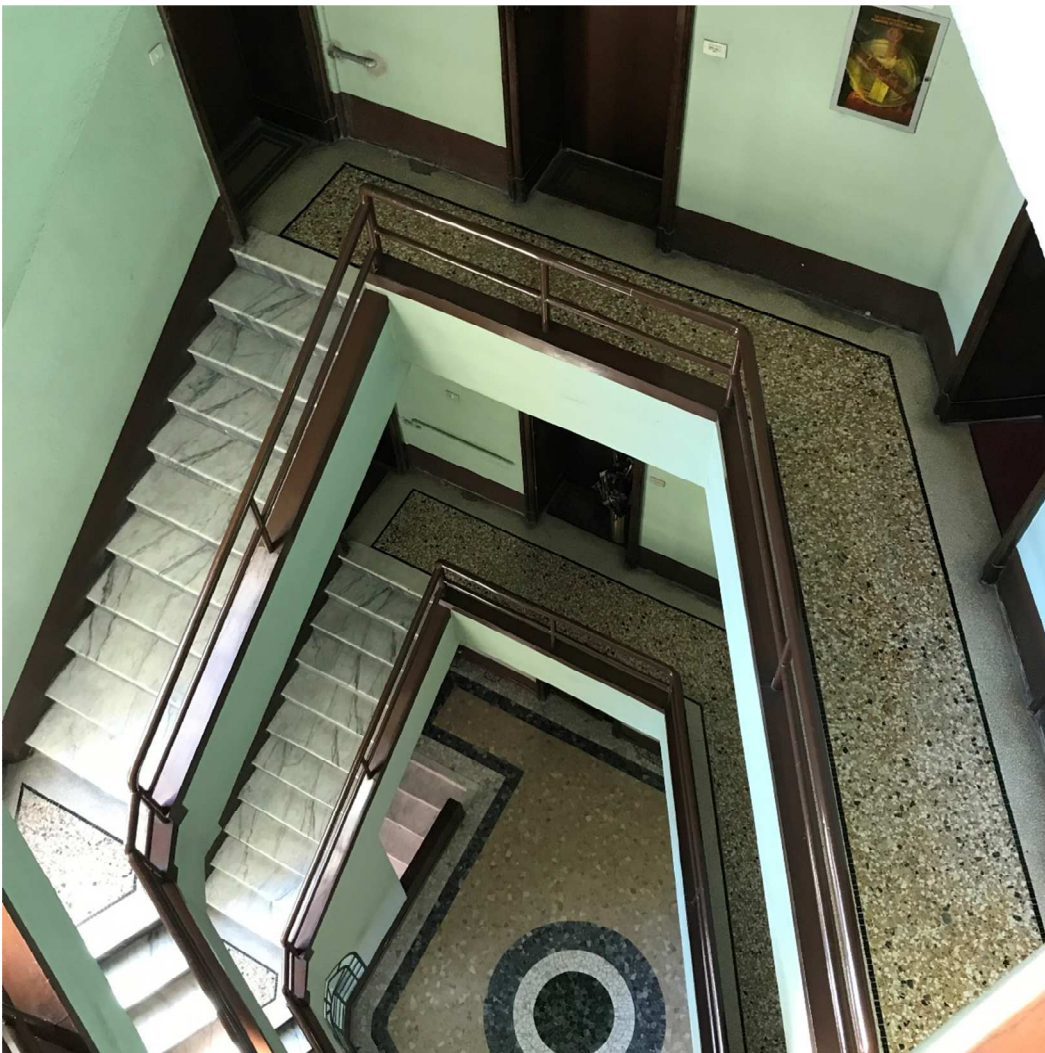




Portone di accesso al Condominio



Androne

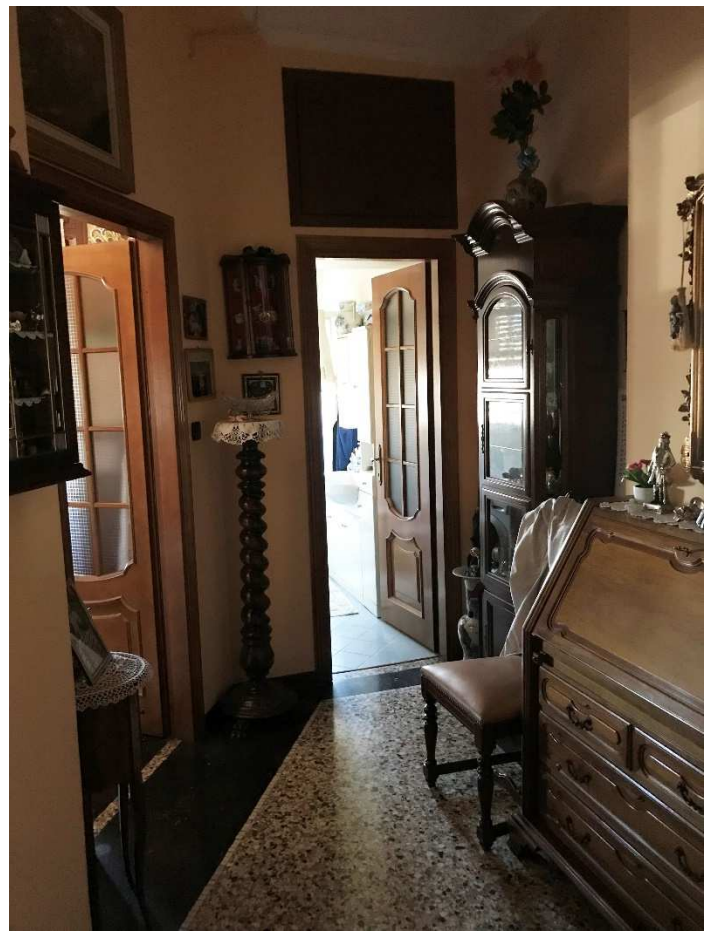


Scala

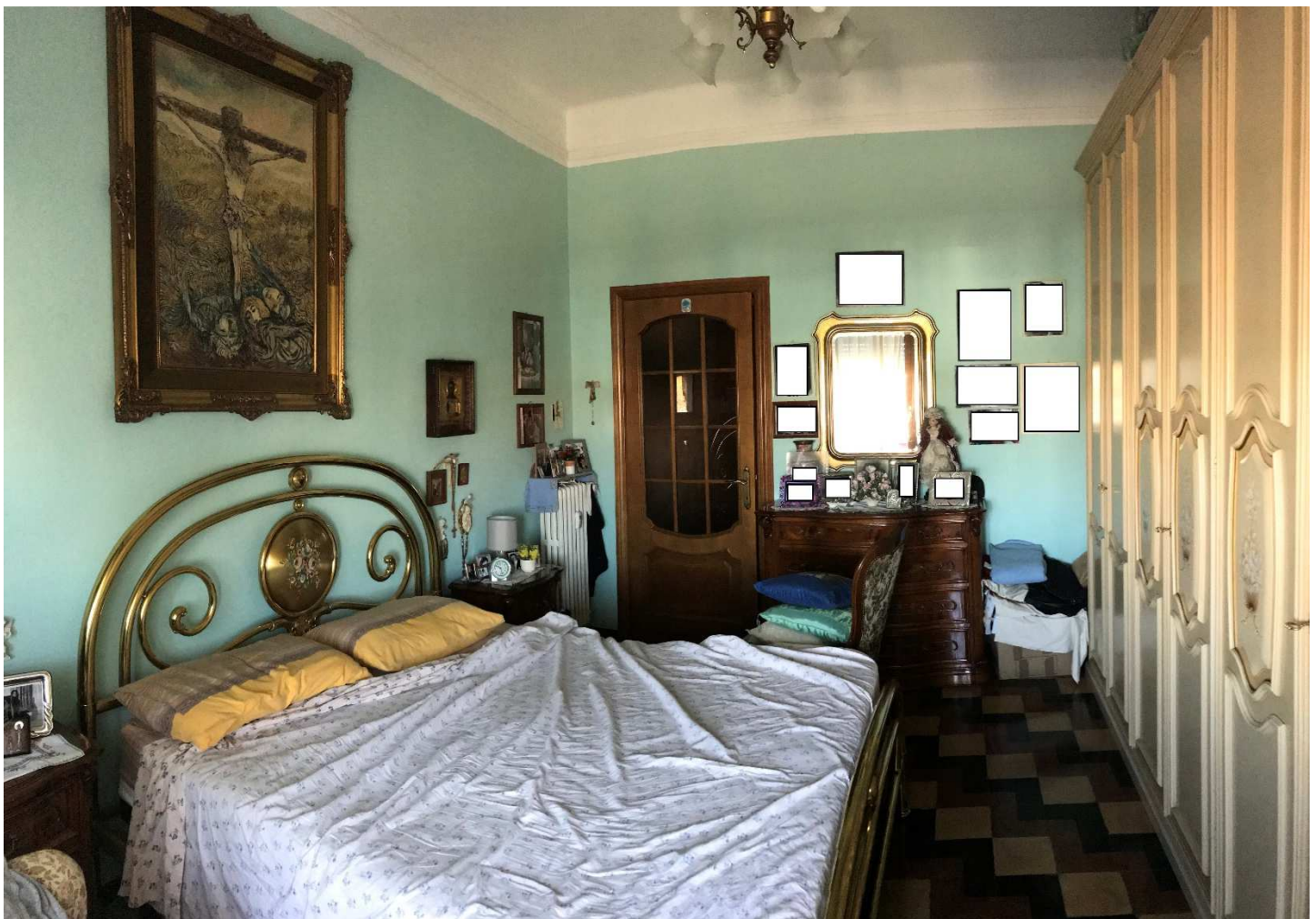




Corridoio di disimpegno con vista porta ingresso

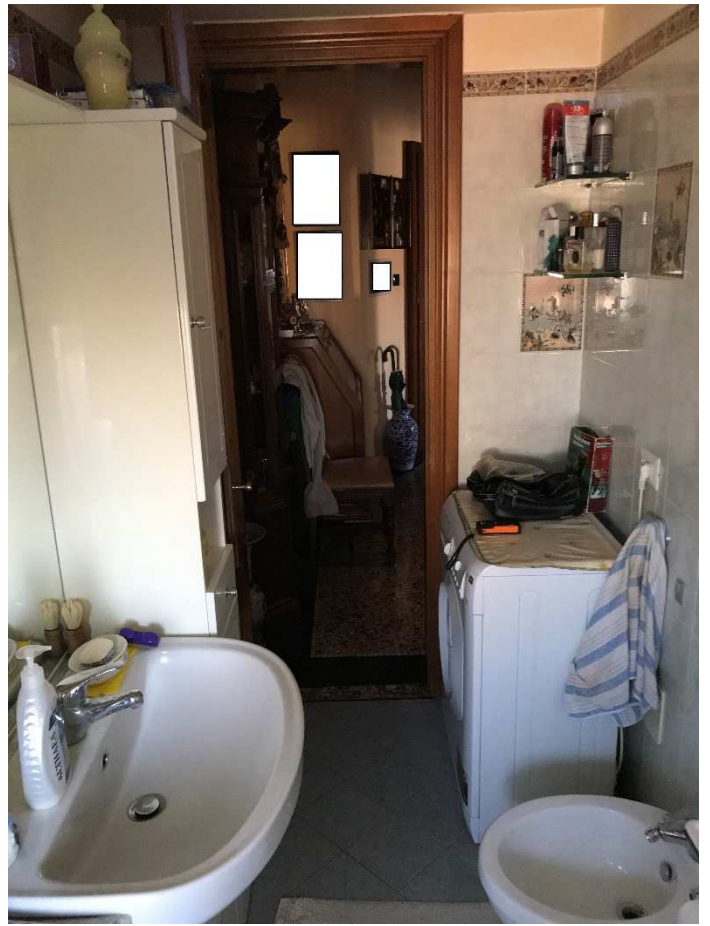
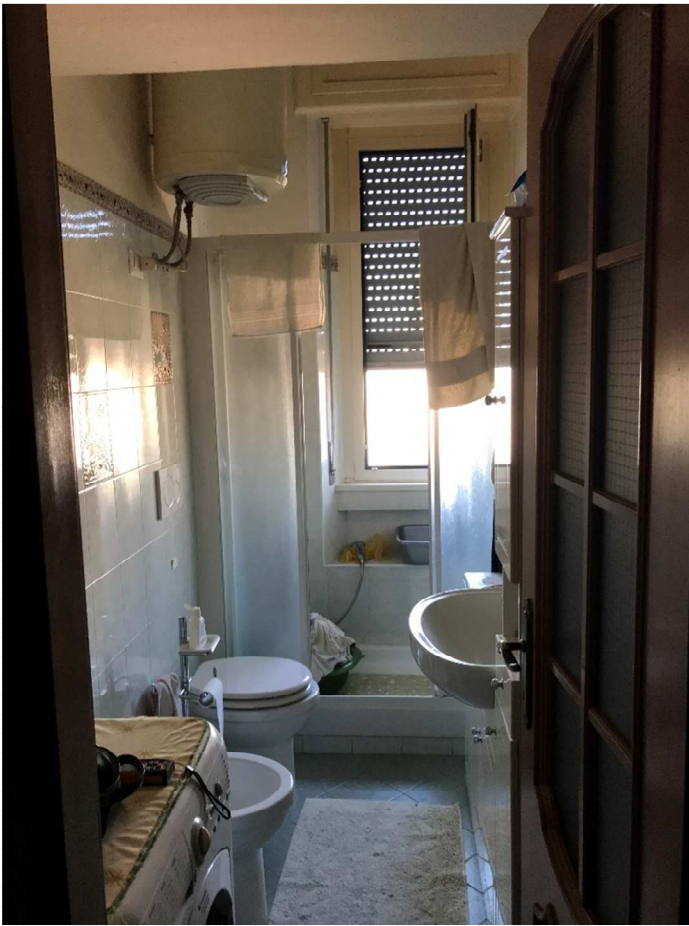


Corridoio di ingresso con vista porta bagno

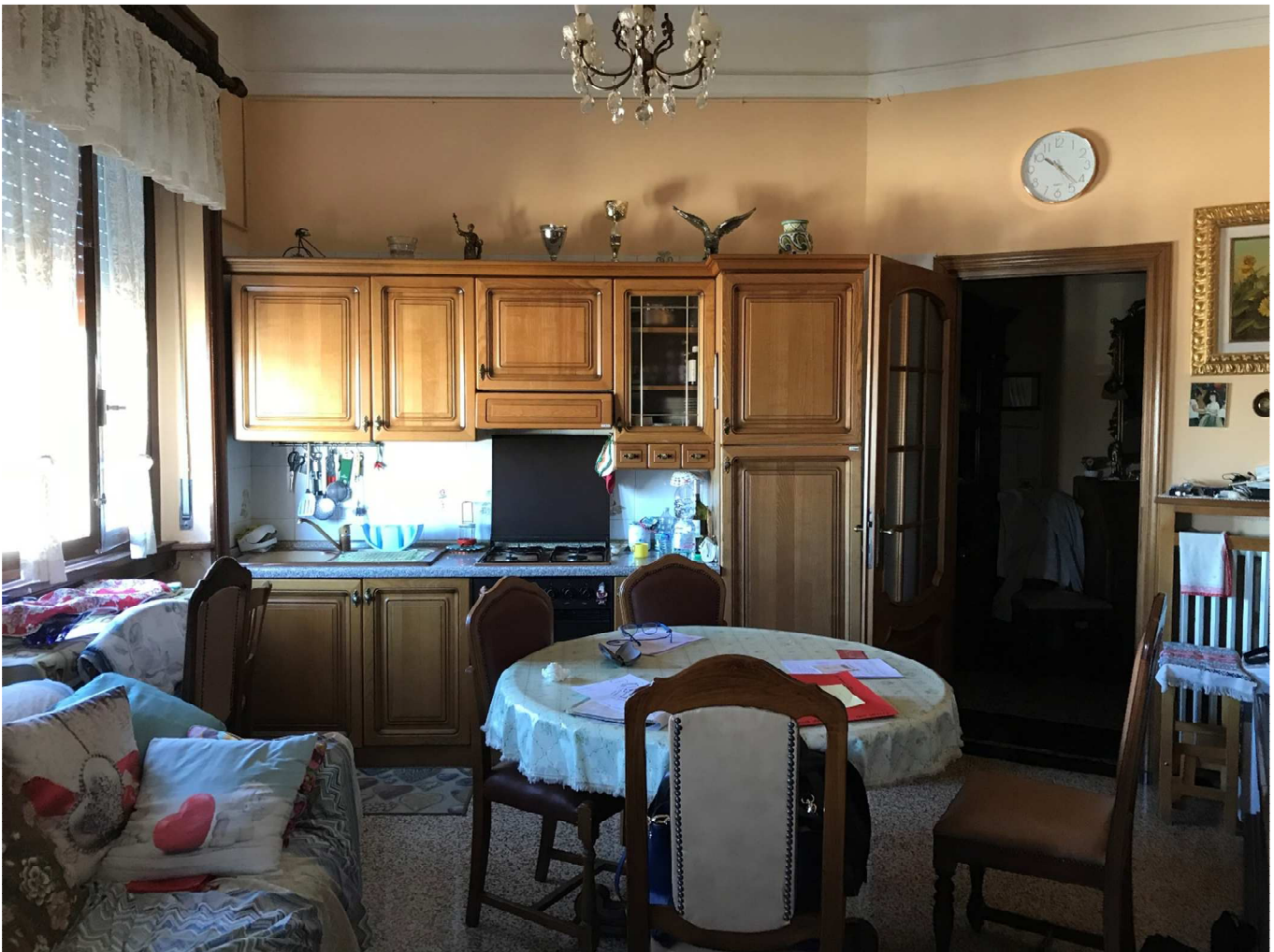


Camera





Bagno



Locale soggiorno con vista angolo cottura

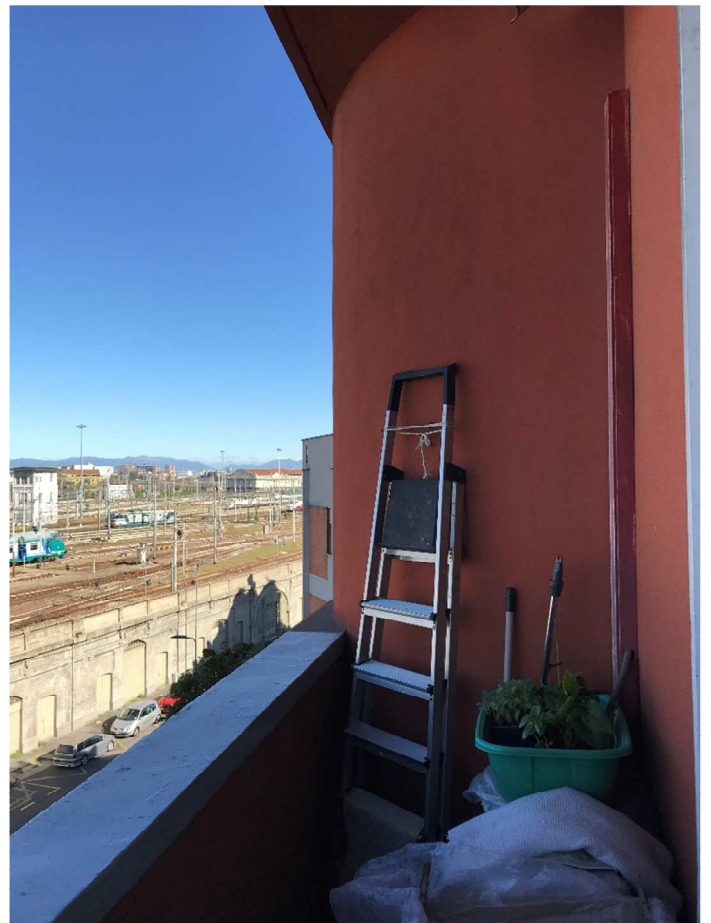


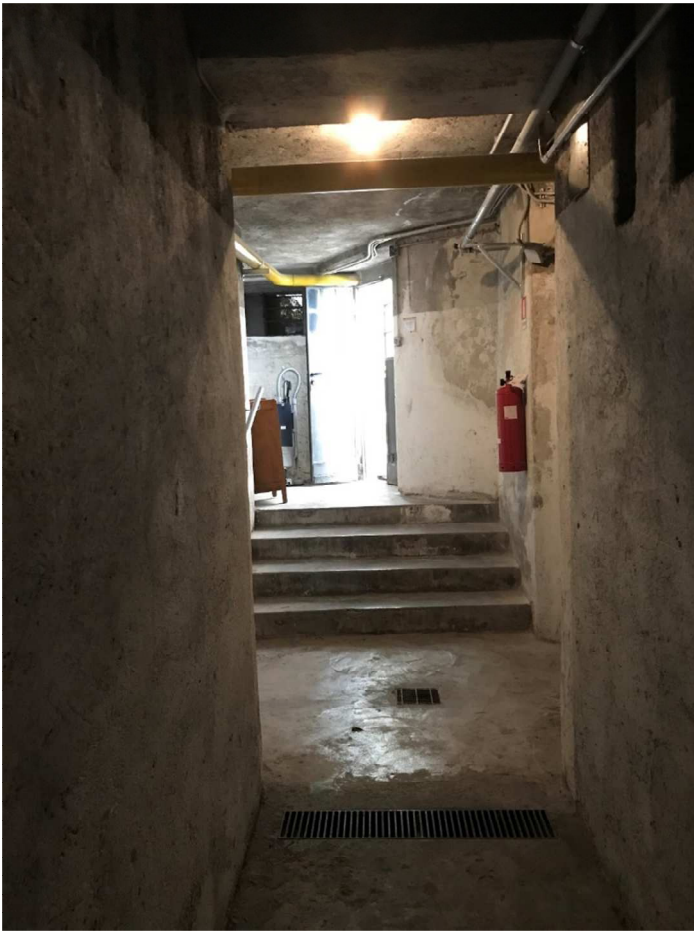


Locale soggiorno

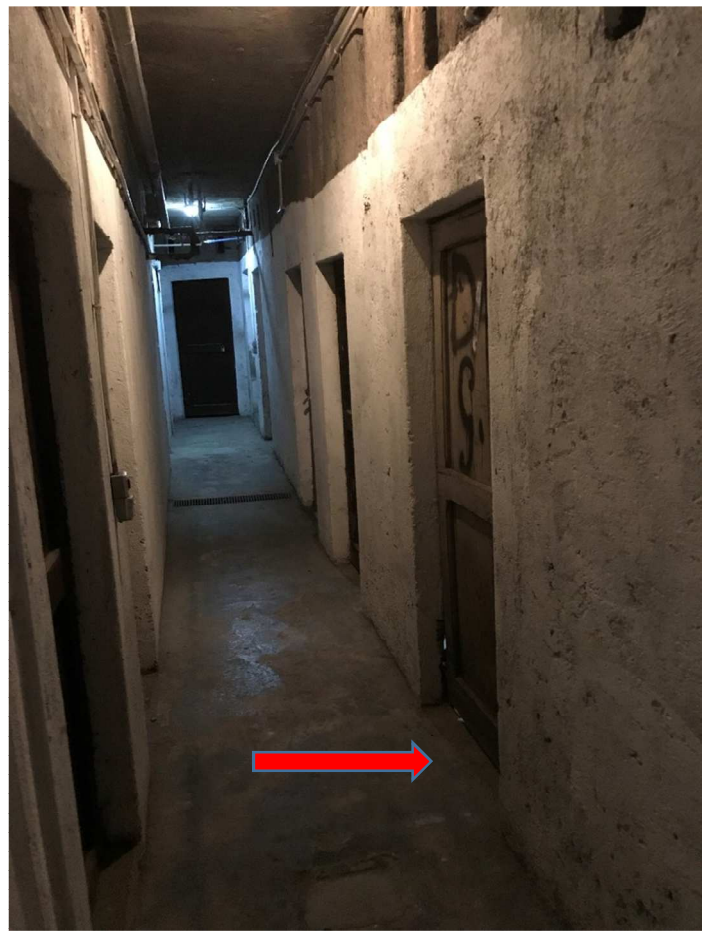


Balcone con accesso dalla camera da letto





Scala di accesso alla cantina



Cantina di pertinenza



Vista interno cantina

