

**Allegato c)**

**c)**

**DOCUMENTAZIONE FOTOGRAFICA**

**Via Carlo Pisacane, 1**

**LIMBIATE (MB)**



Vista del palazzo condominiale da via Pisacane e particolare dell'ingresso.





L'intorno.



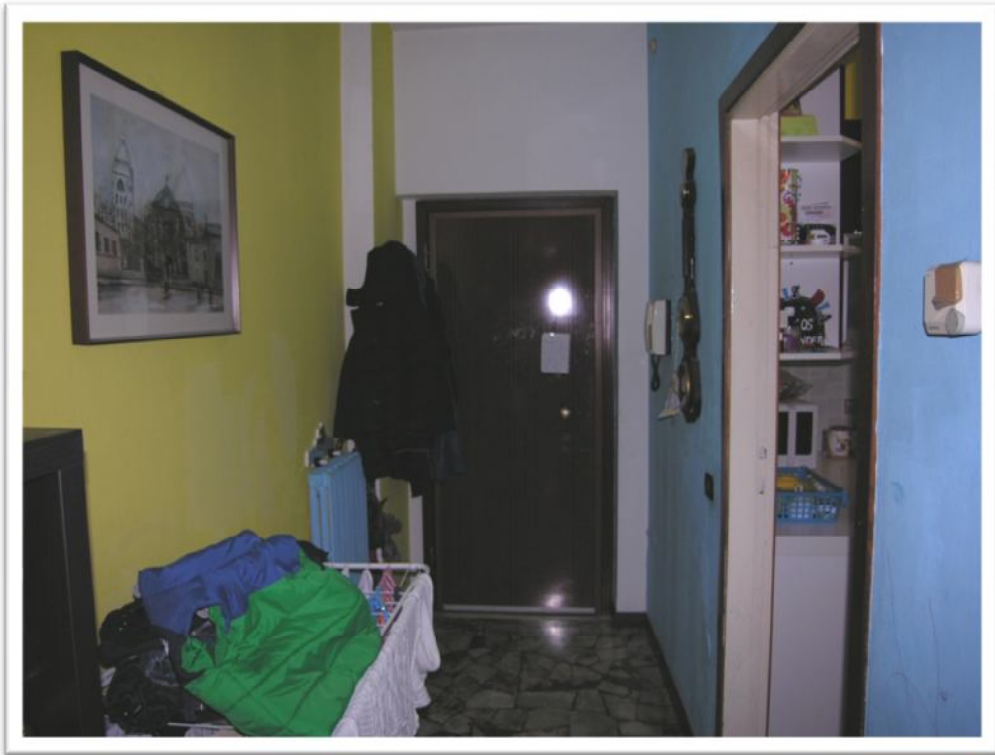


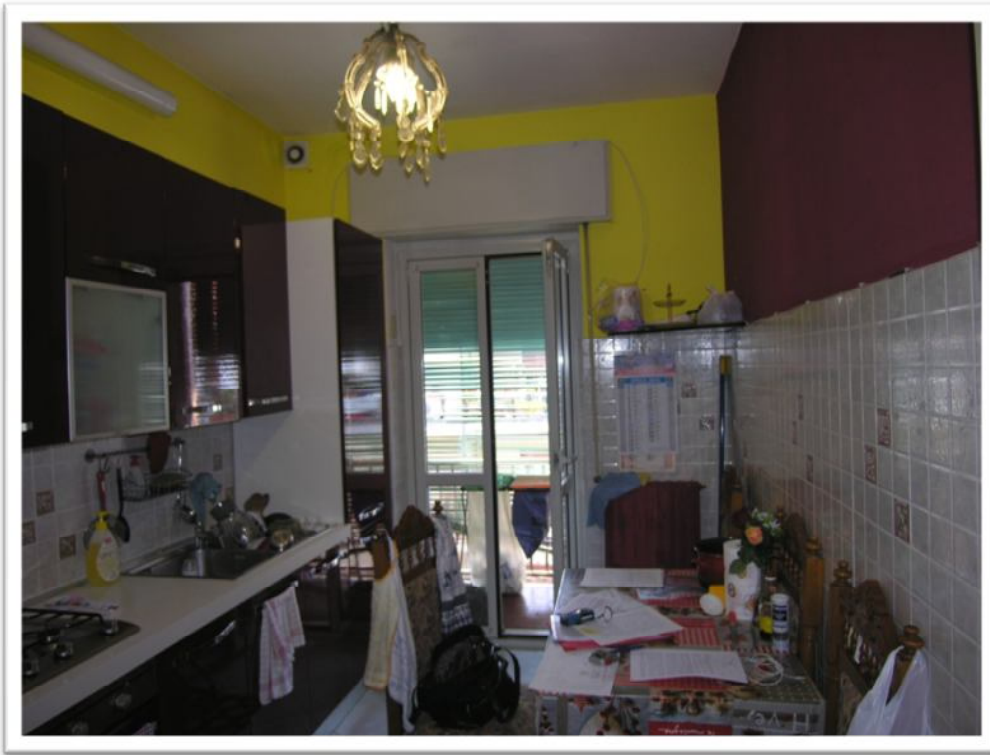
Spazi comuni e pianerottolo del 3° piano.



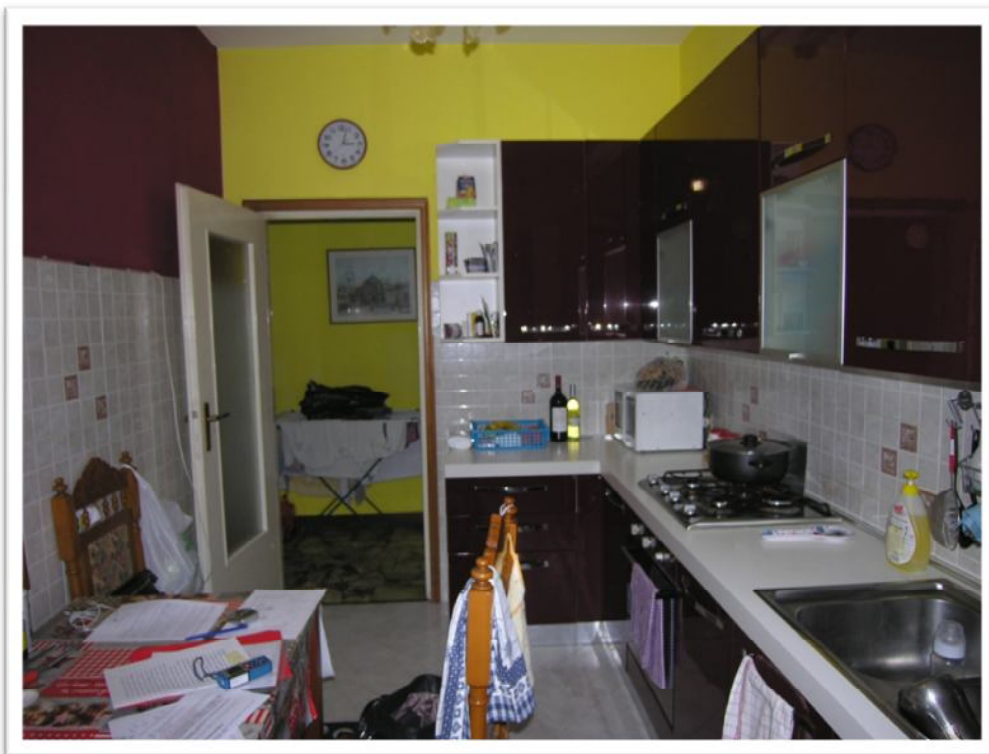


Vista esterna ed interna dell'ingresso dell'alloggio.



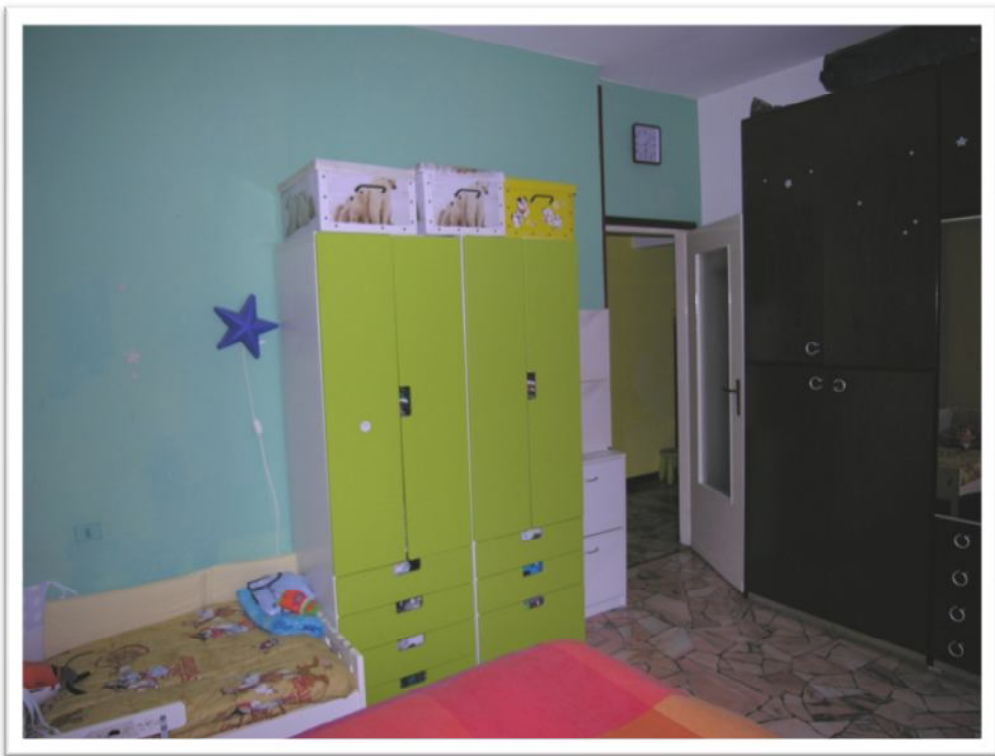


La cucina.



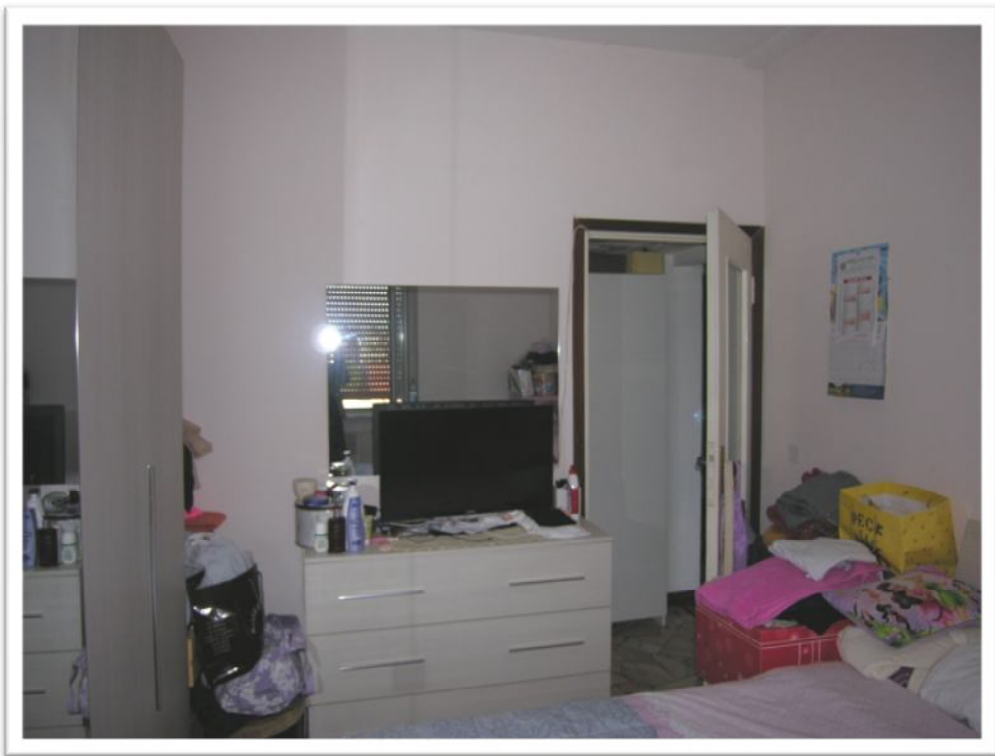


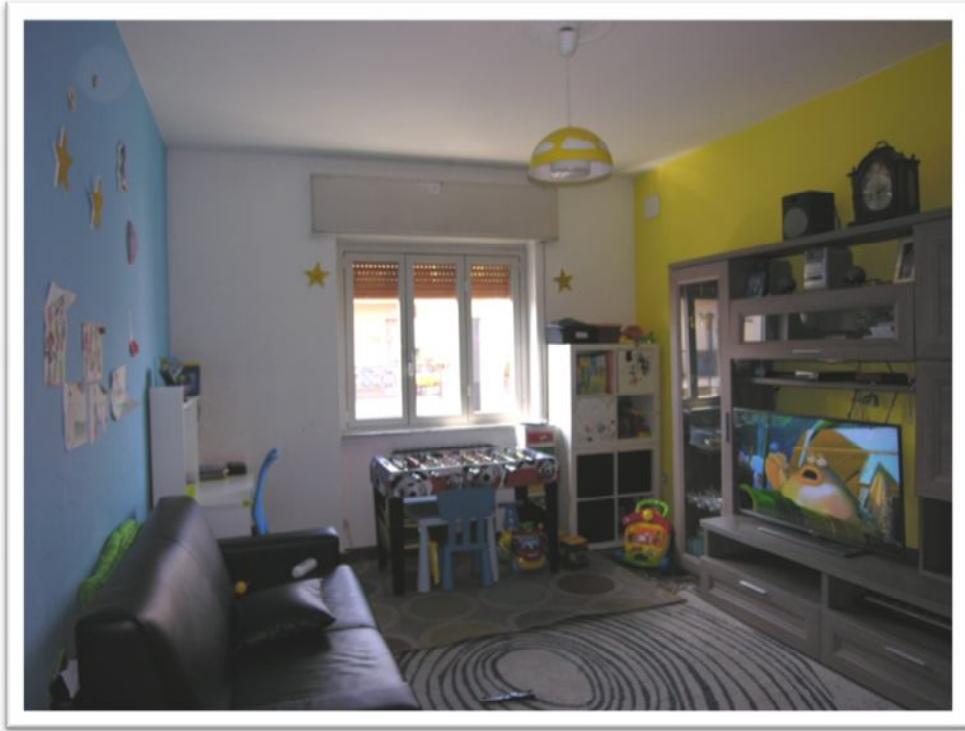
Una delle camere.





La seconda camera.





Il soggiorno.







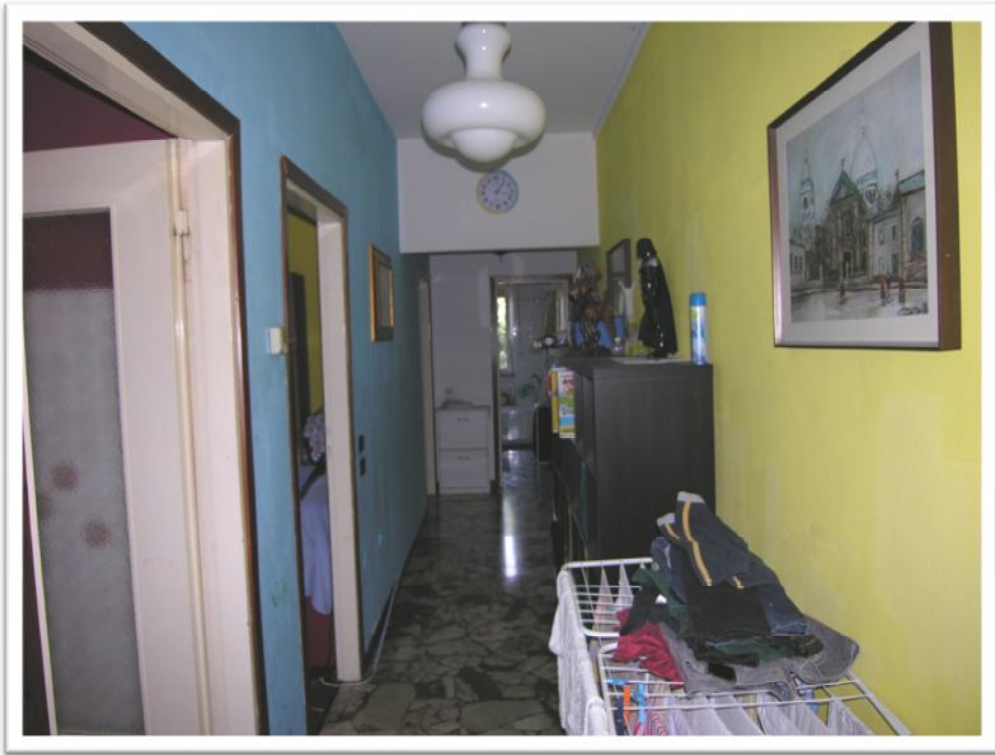
Il bagno.



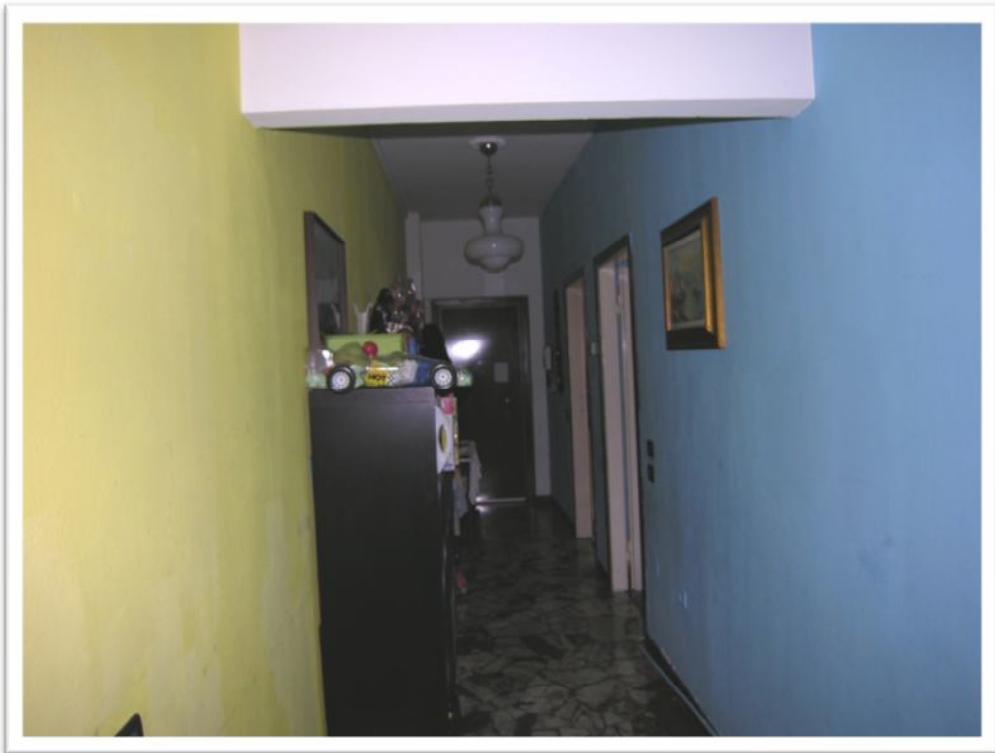


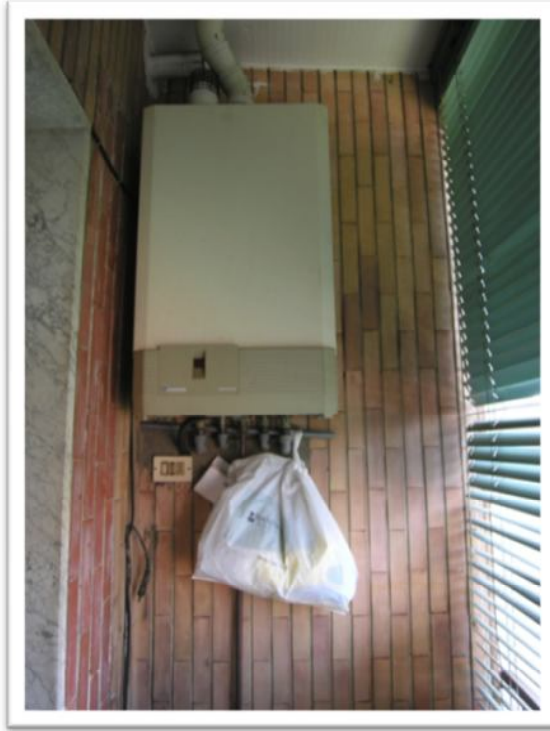
Il disimpegno della zona notte ed il ripostiglio.



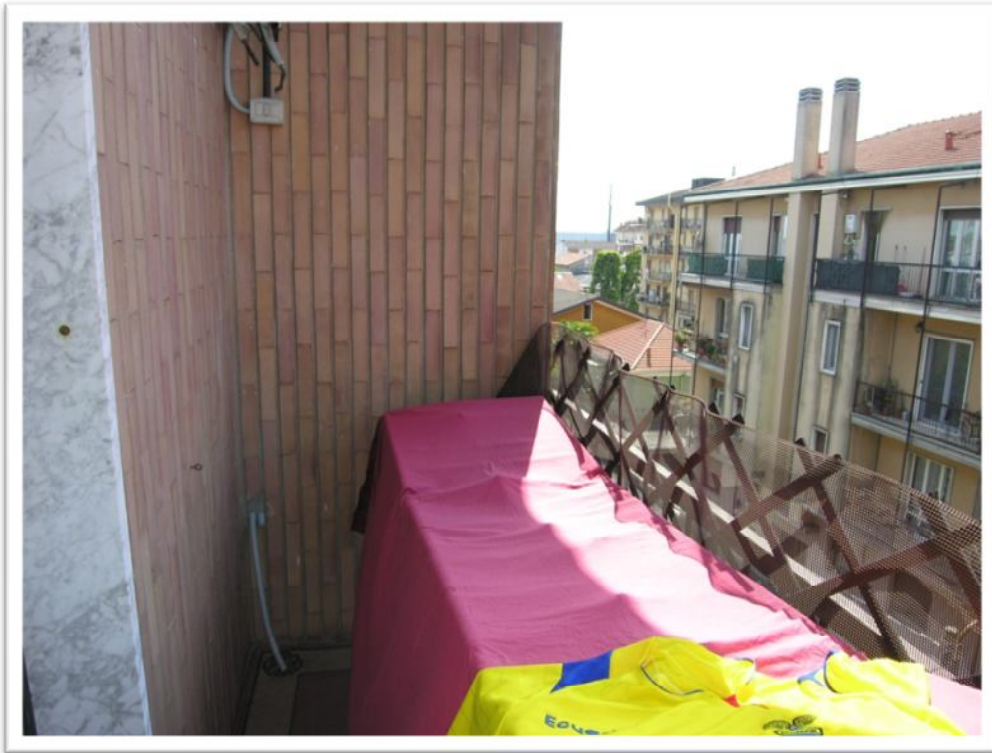


Il disimpegno.





I balconi.



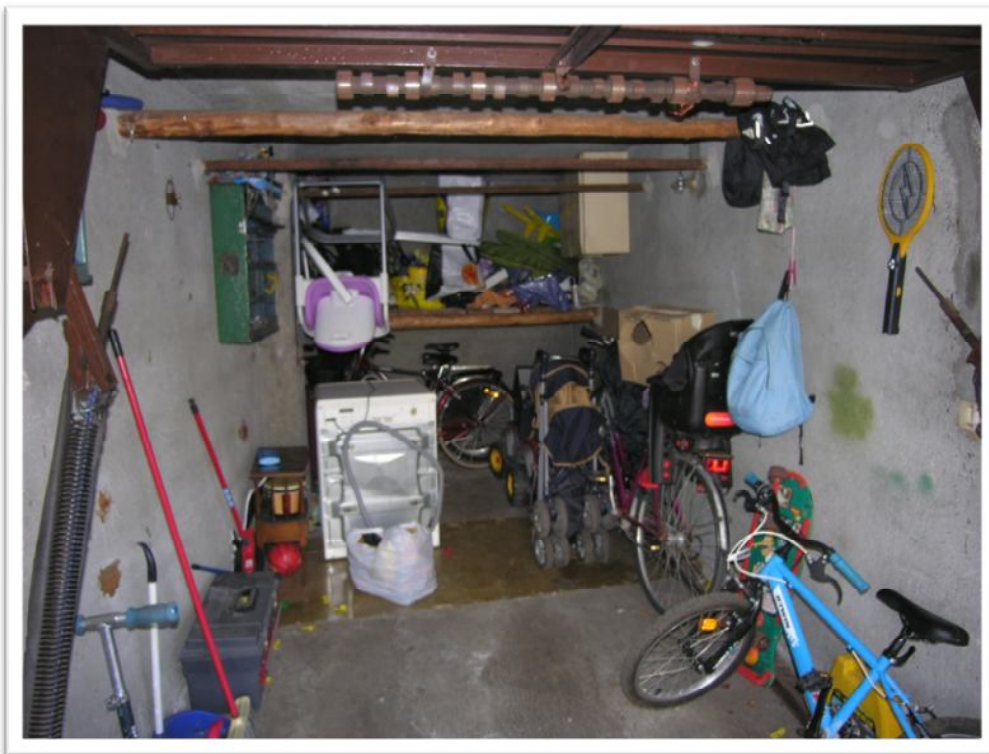


La cantina.





L'autorimessa.





La rampa carraia e patologie del condominio.

