

## ALLEGATO A.

### Rilievo fotografico esterno ed interno dei beni

---



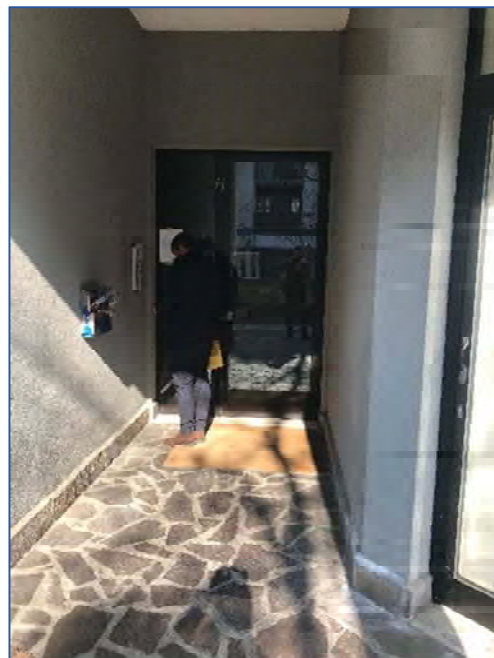
*Foto 1 – immobile di via Raffaello Sanzio 6*



*Foto 2 – immobile di via Raffaello Sanzio 6*



*Foto 3 – immobile di via Raffaello Sanzio 6*



*Foto 4 – ingresso comune Scala B*



*Foto 5 – spazi interni comuni*



*Foto 6 - ascensore*



*Foto 7 – ballatoio comune*



*Foto 8 – ingresso appartamento da ballatoio comune*



Foto 9 - ingresso su soggiorno



Foto 10 - ingresso

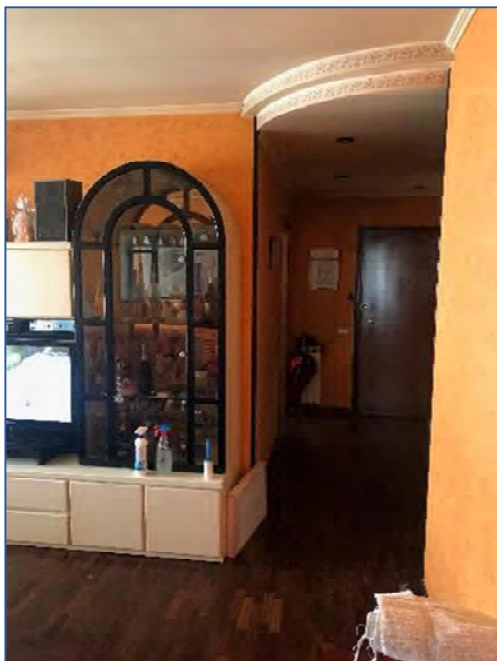


Foto 11 - soggiorno

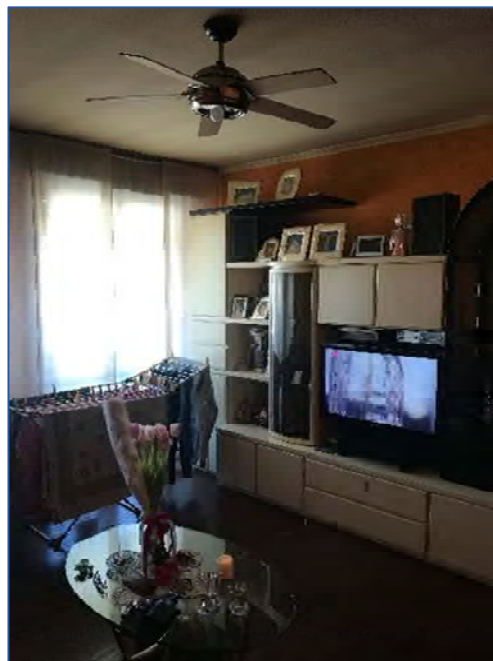


Foto 12 - soggiorno

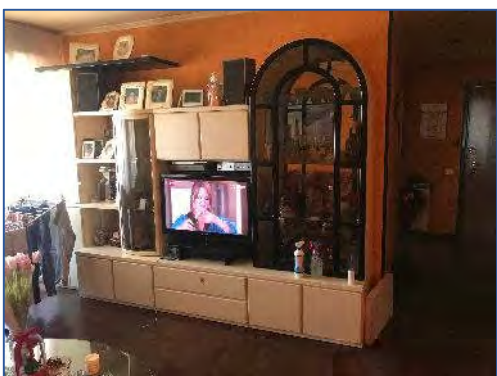


Foto 13 - soggiorno

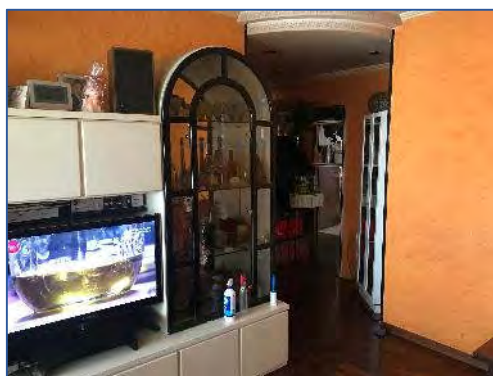


Foto 14 - soggiorno

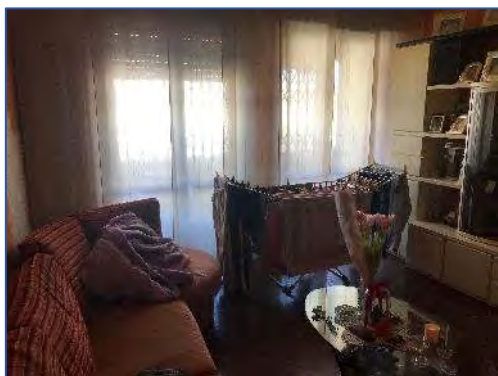


Foto 15 - soggiorno

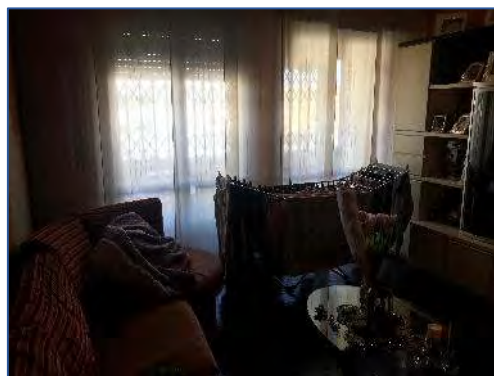


Foto 16 - soggiorno



Foto 17 - soggiorno



Foto 18 - cucina

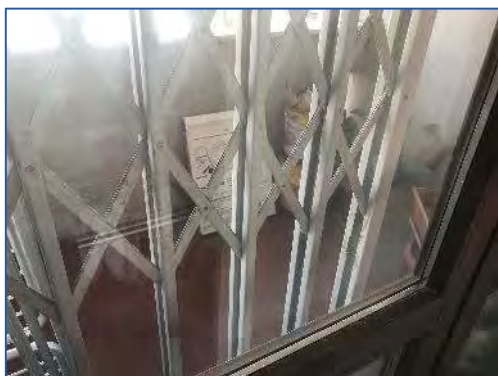


Foto 19 - dettaglio serramenti esterni soggiorno

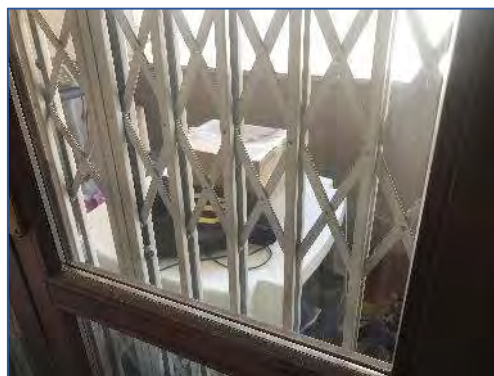


Foto 20 - dettaglio serramenti esterni soggiorno



Foto 21 - dettaglio caldaia su balcone



Foto 22 - balcone



Foto 23 - camera fronte Nord

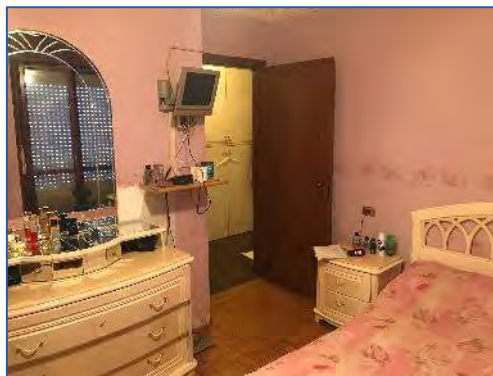


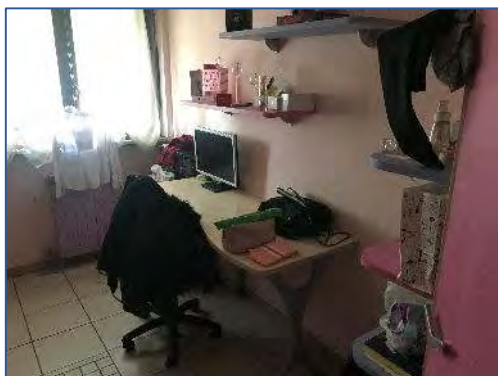
Foto 24 - camera fronte Nord



Foto 25 - camera front Sud



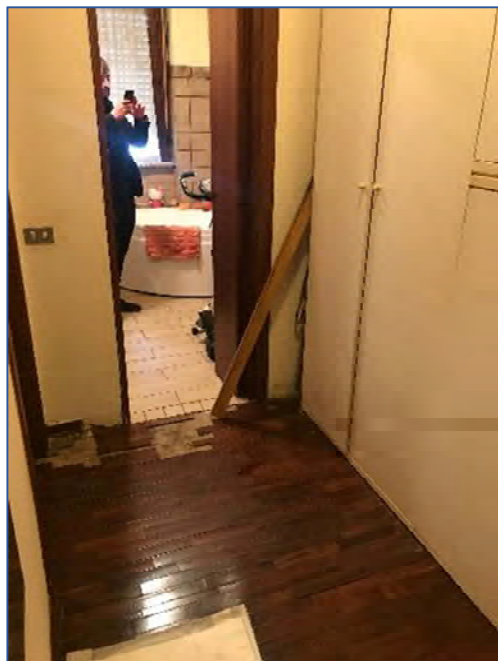
Foto 26 - camera fronte Sud



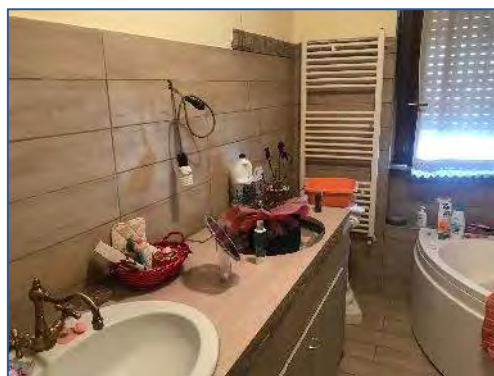
*Foto 27 - camera fronte Sud*



*Foto 28 - disimpegno*



*Foto 29 - disimpegno*



*Foto 30 -bagno finestrato fronte Nord*



Foto 31 - bagno finestrato fronte Nord



Foto 32 - bagno finestrato fronte Nord



Foto 33 - bagno finestrato fronte Nord



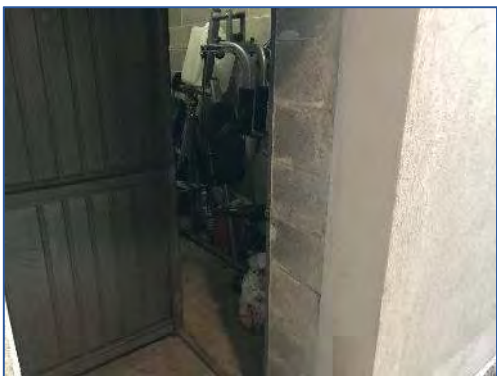
Foto 34 - bagno cieco



*Foto 35 - bagno cieco*



*Foto 36 - corridoio comune piano S1*



*Foto 37 - ingresso cantina*



*Foto 38 - cantina*



*Foto 39 - spazi di manovra comune*



*Foto 40 - spazi di manovra comune*





*Foto 41 - ingresso box*



*Foto 42 - ingresso box*



*Foto 43 - box*