

all. 11

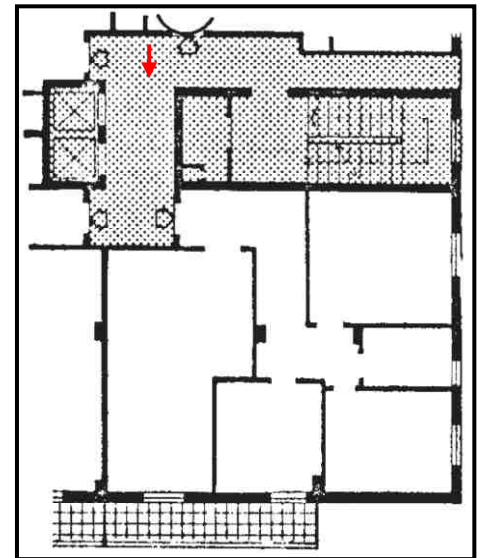
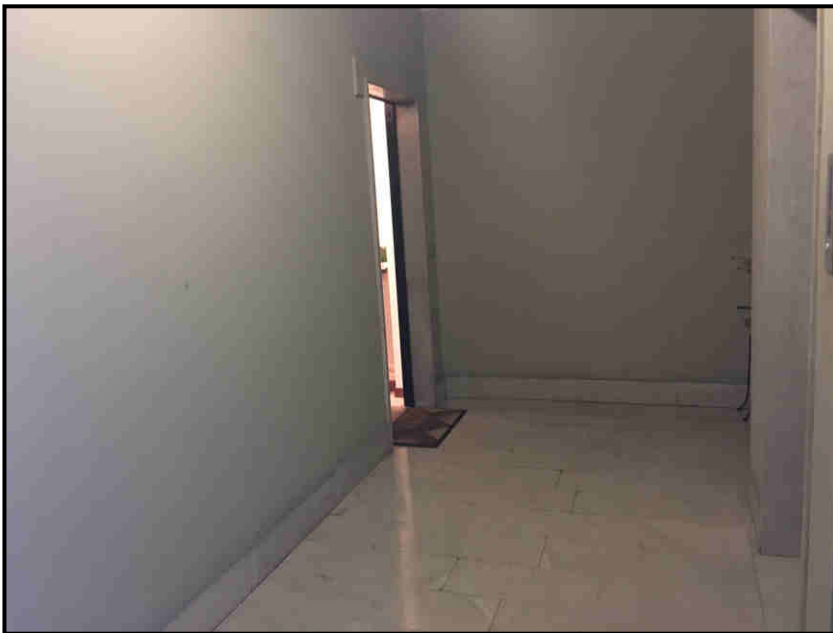
**Fotografie esterne ed interne del bene,
nonché la relativa planimetria**





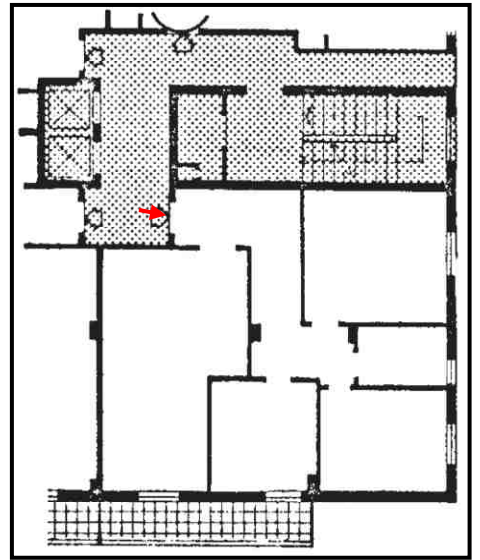
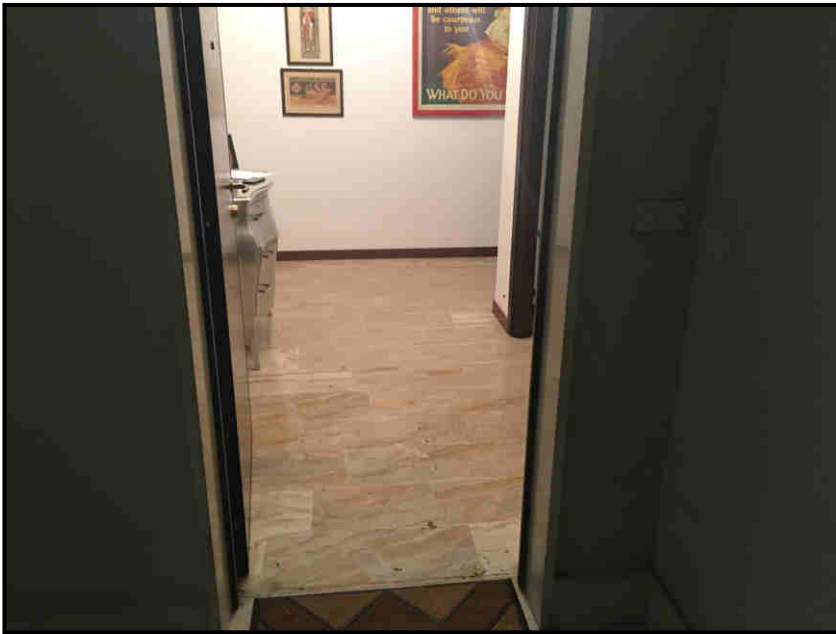
foto da via f.lli Bandiera

Foto interne

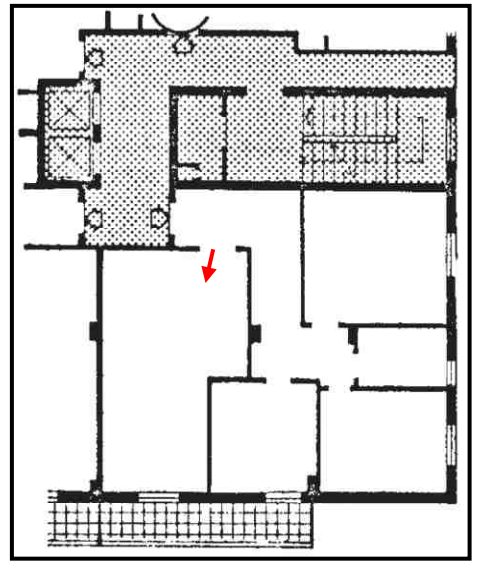
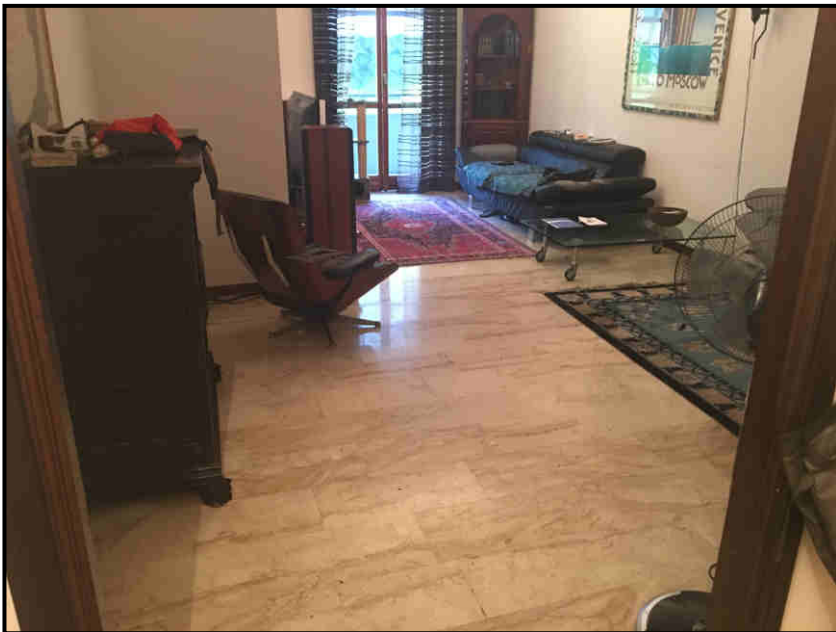


pianerottolo di ingresso al piano

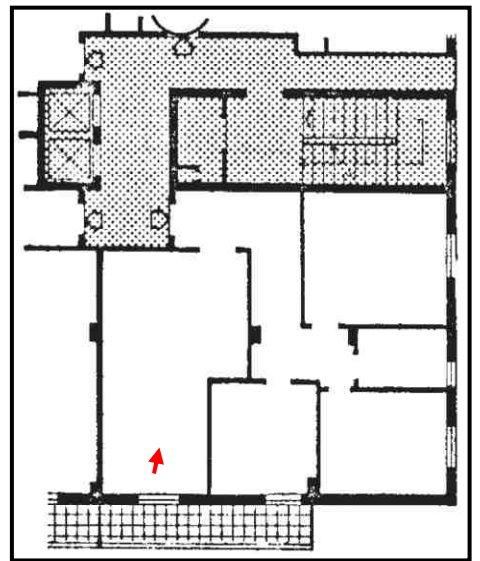
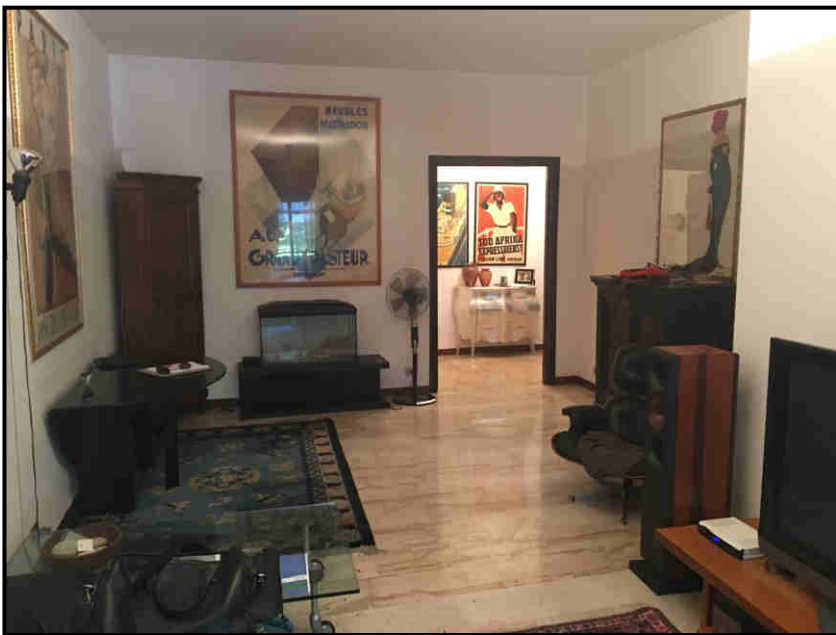




Ingresso

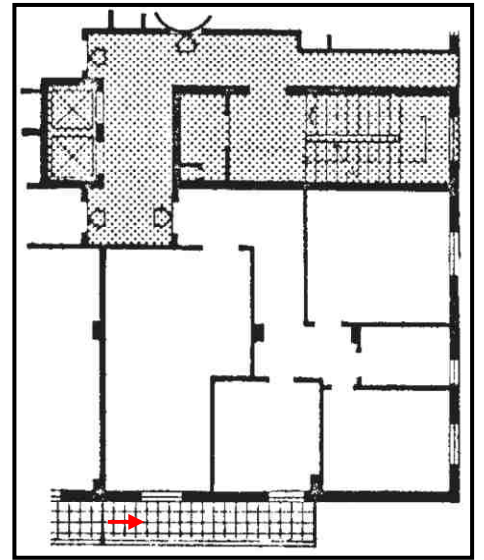
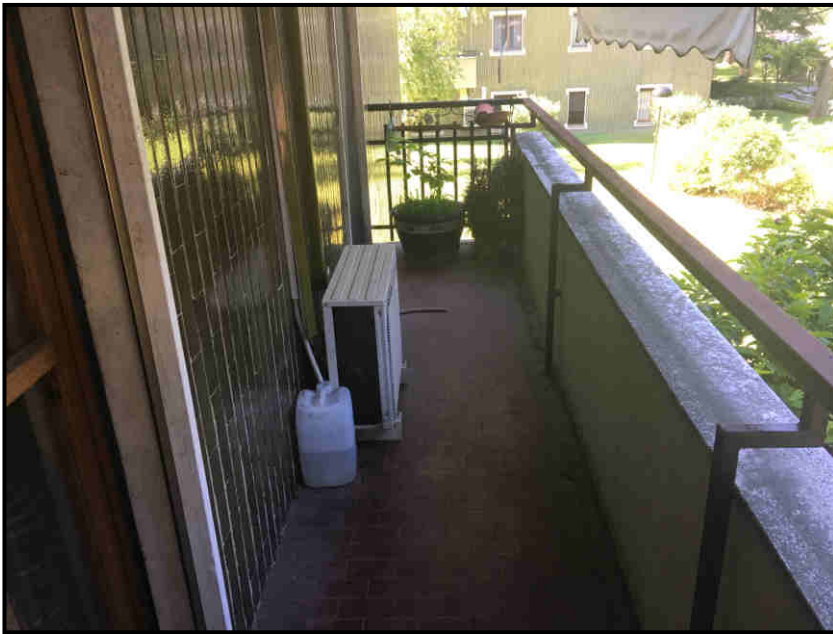


Soggiorno

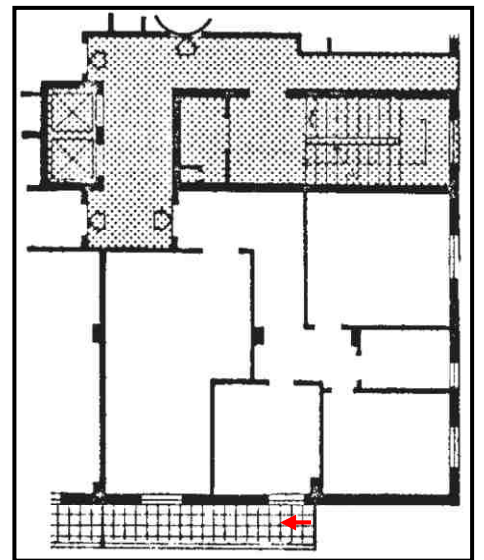


Soggiorno

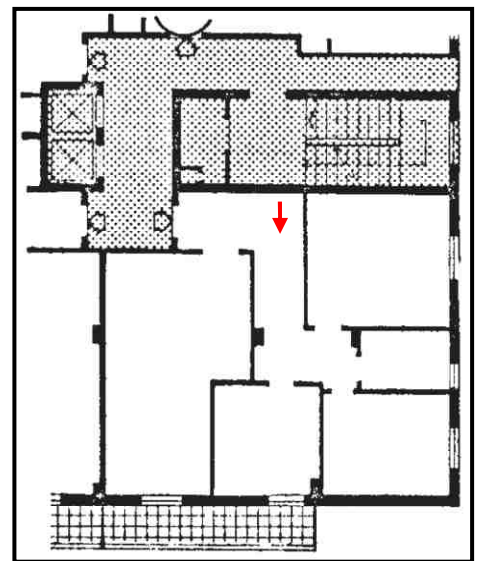
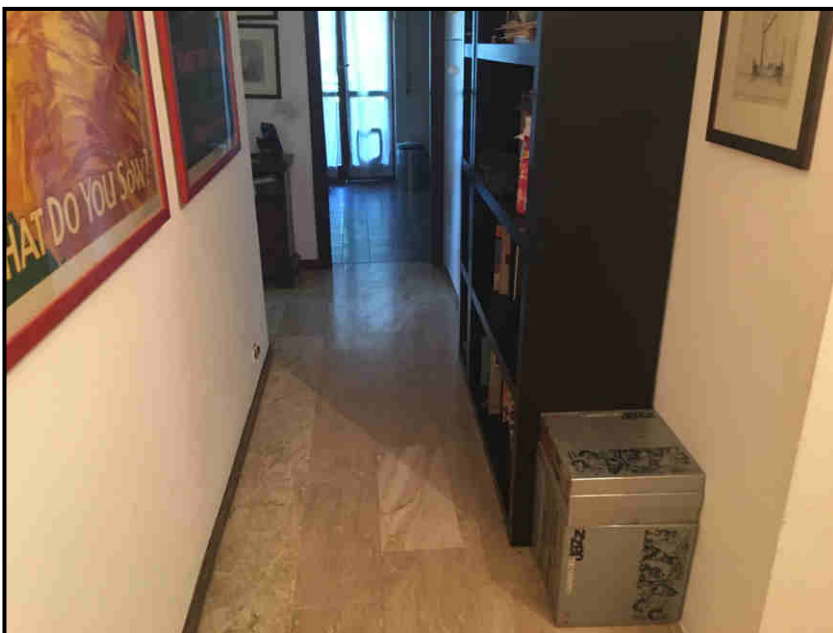




Balcone

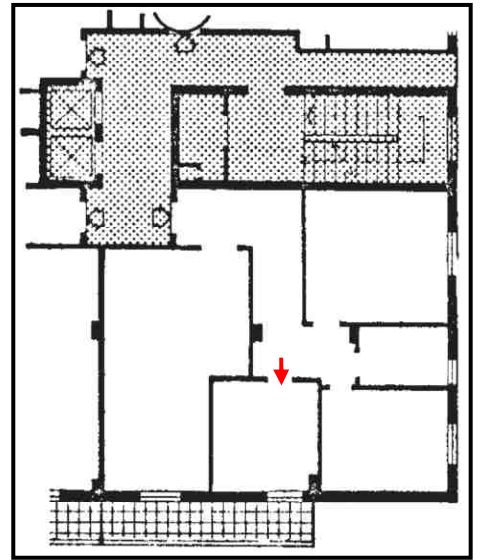
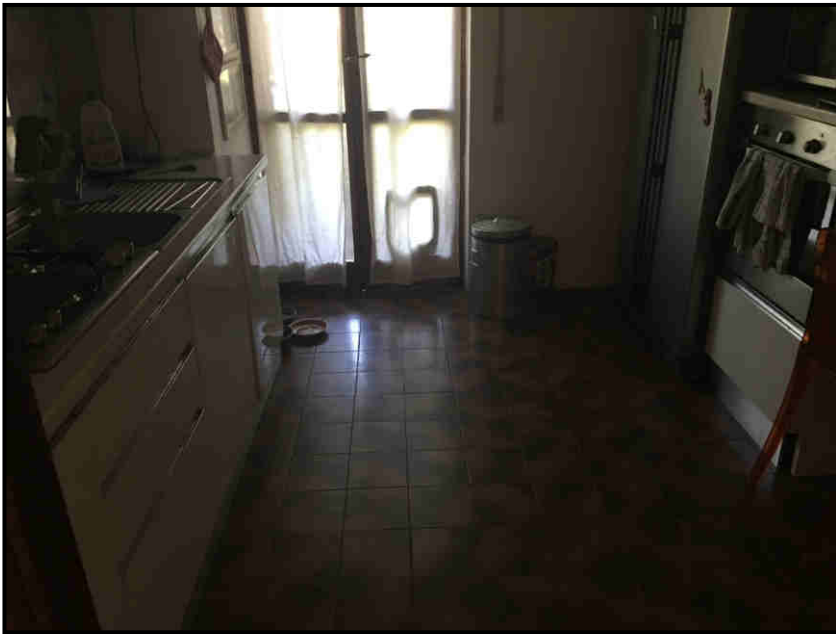


Balcone

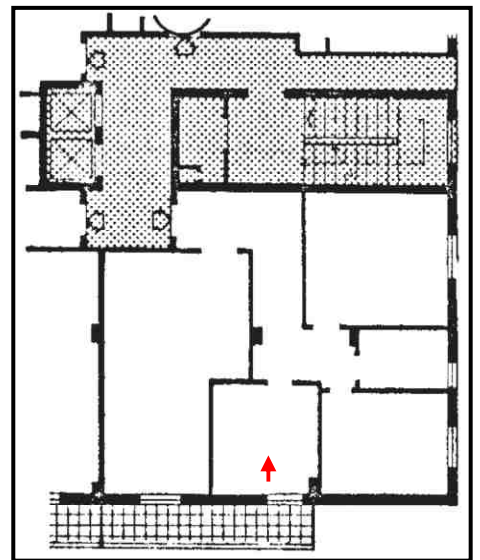
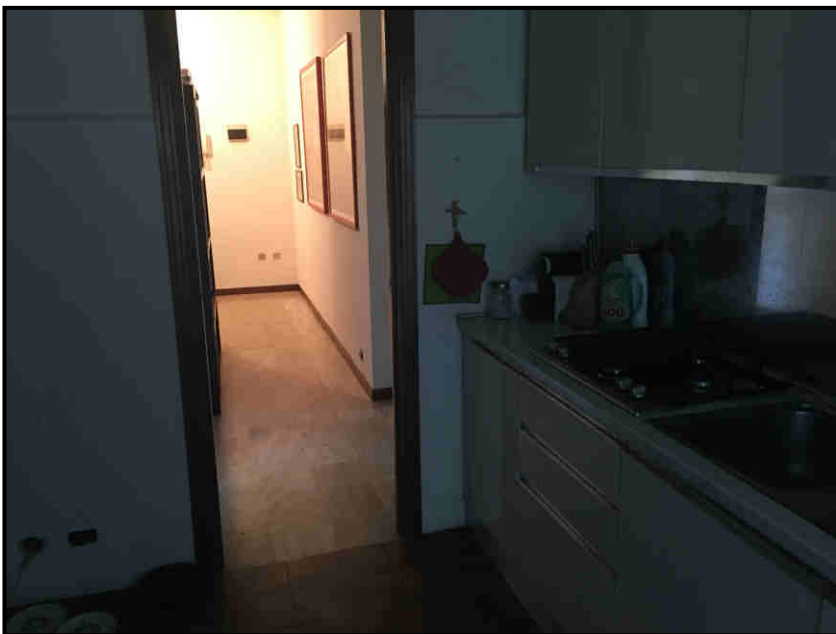


Disimpegno

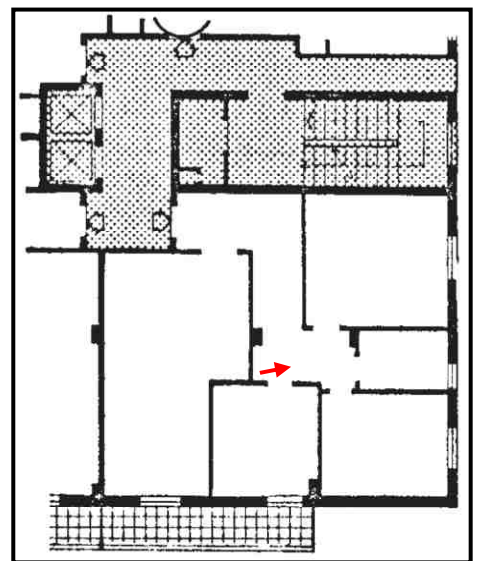
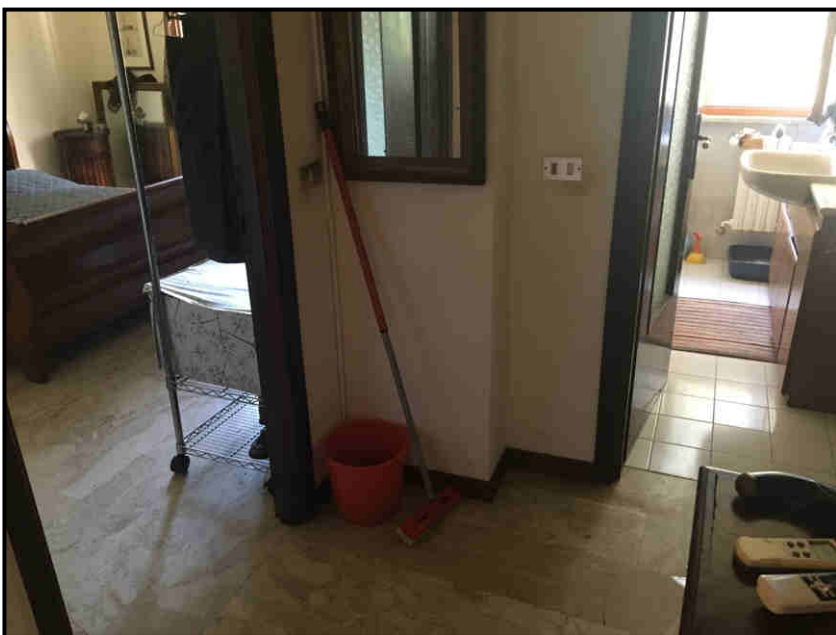




Cucina

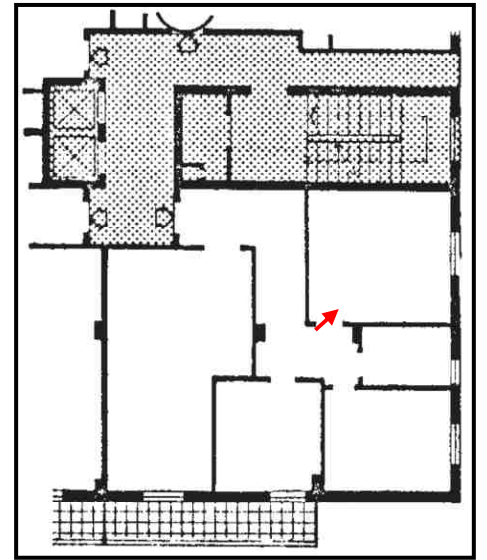
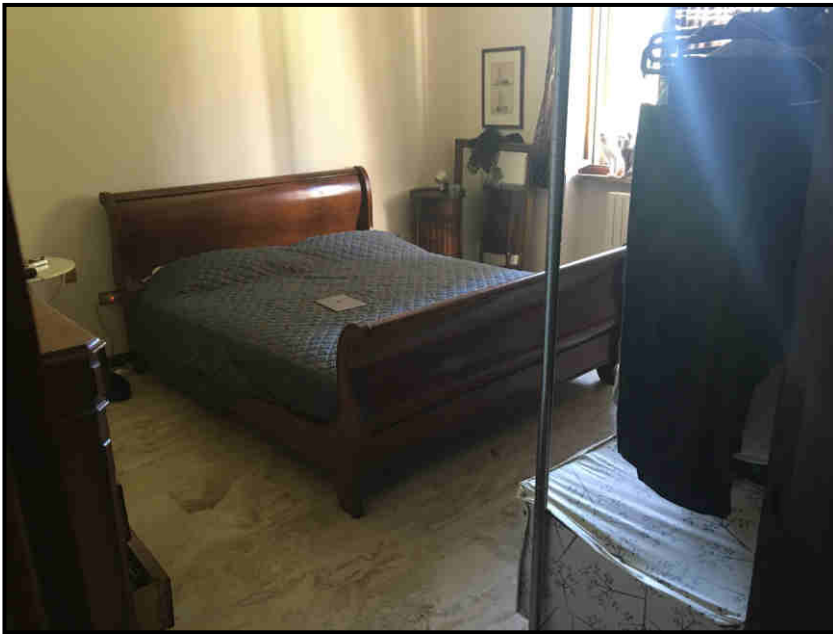


Cucina

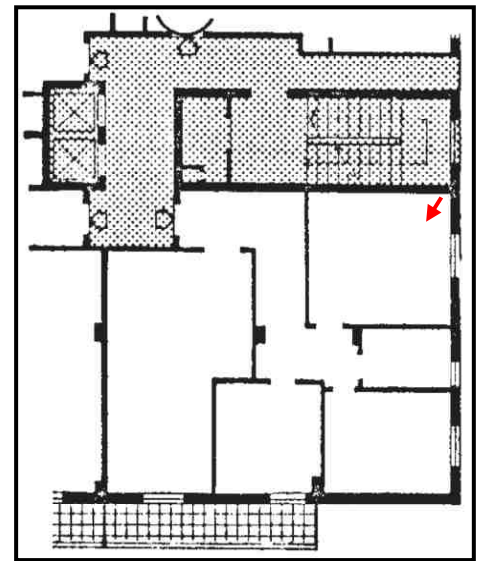


Disimpegno

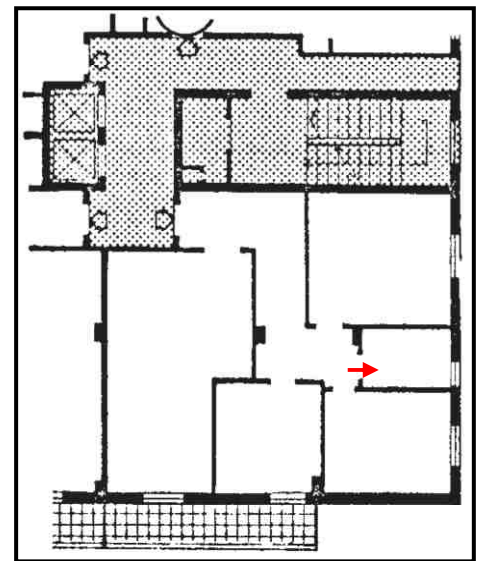
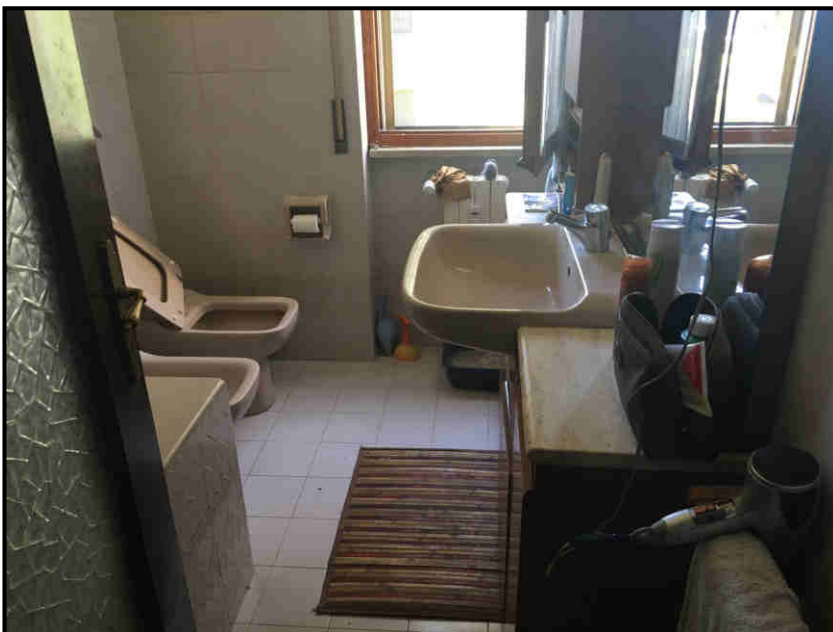




Camera matrimoniale

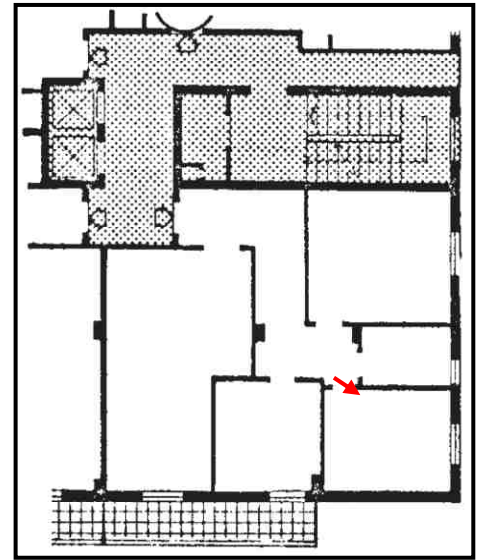
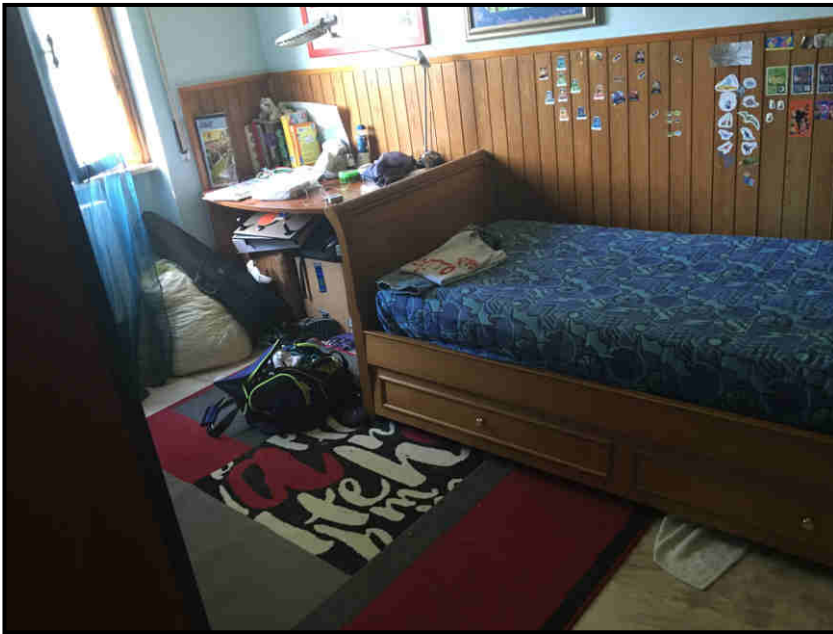


Camera matrimoniale

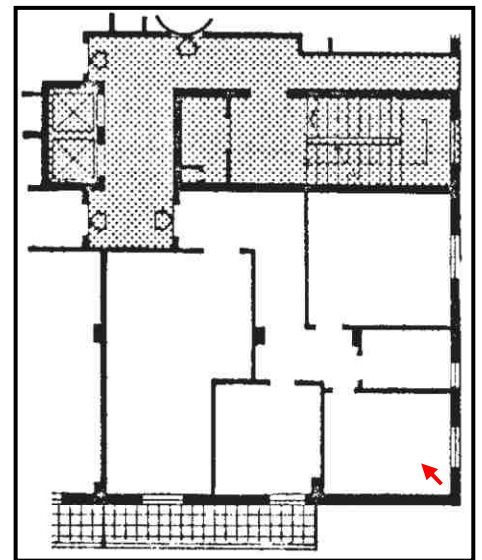
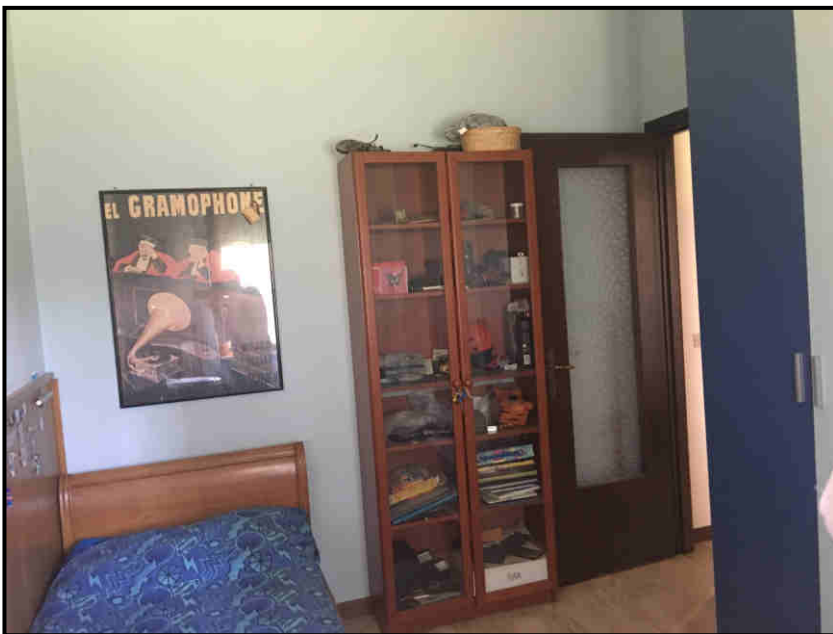


Bagno

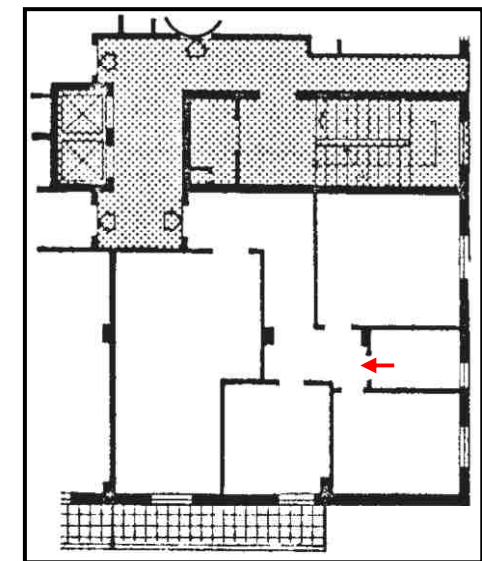
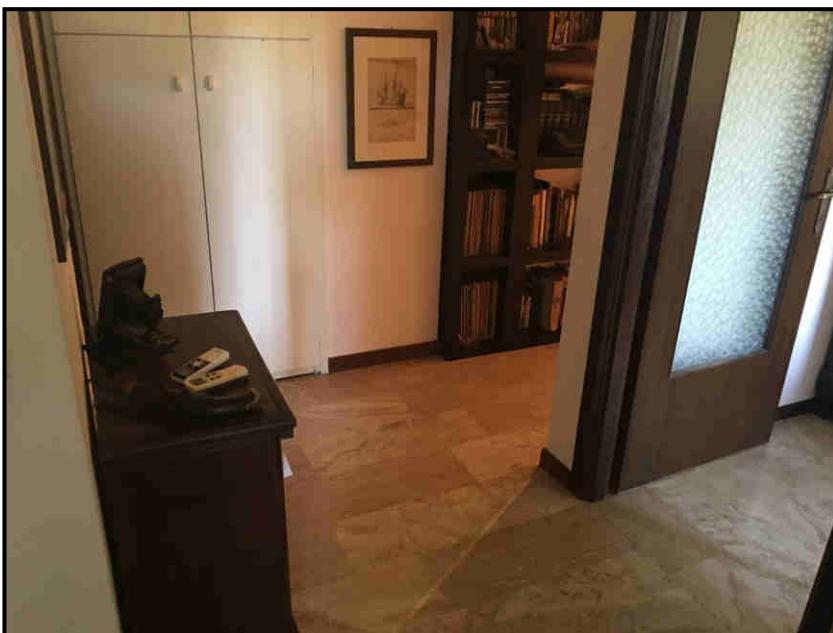




Camera singola



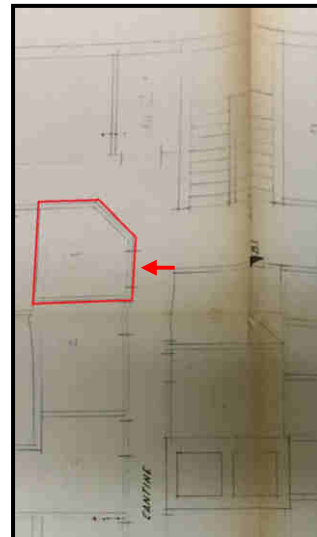
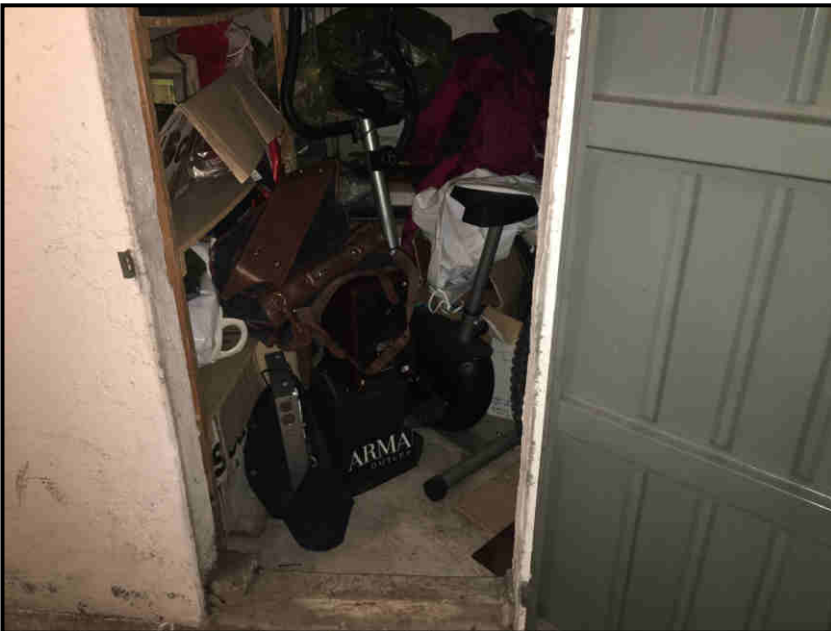
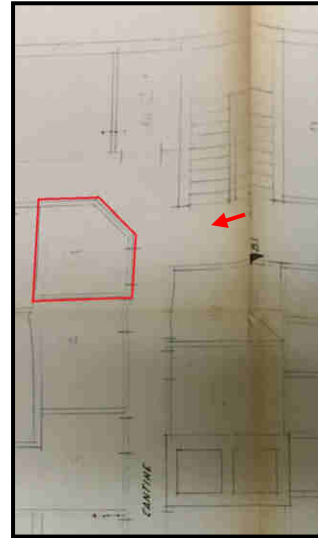
Camera singola



Disimpegno



Cantina



La planimetria utilizzata per la rappresentazione planimetrica della cantina è quella del titolo edilizio in quanto quella catastale non è conforme.

